

The jTrax Navaid system allows military jumpers to conduct missions with long offsets and guide them toward their intended landing area in a reliable and precise way. The jTrax Navaid is a complete system that provides the jumper with navigation guidance using a single device.

The jTrax Navaid system includes:

- one pilot unit
- one display screen
- one support board or harness
- one back-up compass

The jTrax Pilot Unit has been specifically designed for the military free fall mission. The ruggedized module uses a proven sensor suite derived from the avionics of the Airborne Systems family of Guided Precision Aerial Delivery Systems (GPADS).

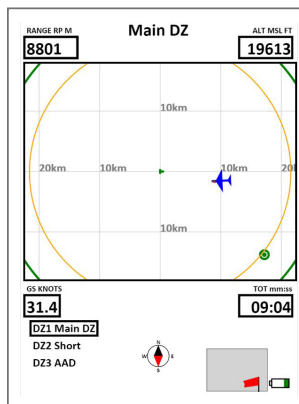
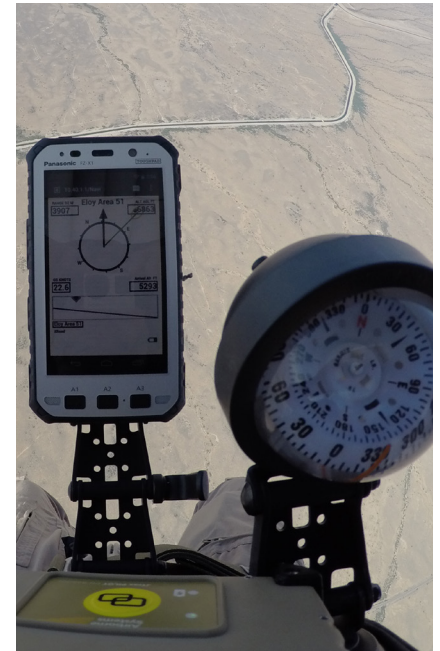
Various adjustable settings allow the user to configure the display based on the experience of the jumpers and the requirements of the mission.

Three types of screens can be displayed to the jumper:

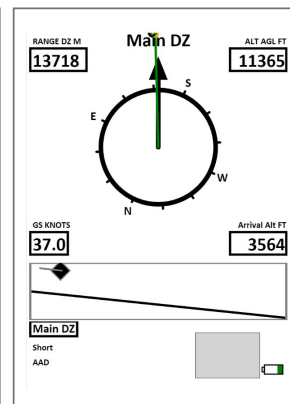
- Jumpmaster screen to be used on the plane to check the progress of the flight toward the release point.
- Navigation screen to be used under canopy to guide the jumper towards the landing zone.
- Map display of the area below the jumper during the flight under canopy.

The jTrax Navaid can have one primary target and two alternate landing targets. A push button located on the jTrax Pilot can be activated with gloves to allow the jumper to rotate through screens and landing areas.

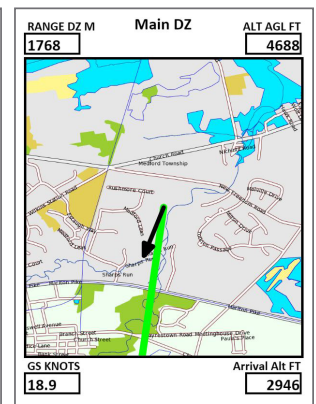
The jTrax Navaid is fully integrated with the jTrax Mission Planner software developed by Airborne Systems for GPADS and Military Free Fall operations.



Jumpmaster screen



Navigation screen



Map screen

Specifications

Dimension

5" x 5" x 1.5" (13cm x 13cm x 4cm)

Weight

1.7 lb (750 gm)

